



User Guide

Adobe PostScriptTM Printer Driver ^{version} 8.3.1



© 1996 Adobe Systems Incorporated. All rights reserved.

Adobe PostScript Printer Driver for the Macintosh®, Version 8.3.1

This manual, as well as the software described in it, is furnished under license and may be used or copied only in accordance with the terms of such license. The content of this manual is furnished for informational use only, is subject to change without notice, and should not be construed as a commitment by Adobe Systems Incorporated.

Adobe Systems Incorporated assumes no responsibility or liability for any errors or inaccuracies that may appear in this book.

Except as permitted by such license, no part of this publication may be reproduced, stored in a retrieval system, or transmitted, in any form or by any means, electronic, mechanical, recording, or otherwise, without the prior written permission of Adobe Systems Incorporated.

Adobe is a trademark of Adobe Systems Incorporated or its subsidiaries and may be registered in certain jurisdictions. Macintosh and Apple are registered trademarks of Apple Computer, Inc. All other products or name brands are trademarks of their respective holders.

Written and designed at Adobe Systems Incorporated, 1585 Charleston Road, Mountain View, CA 94043-7900, USA

Adobe Systems Europe Limited, Adobe House, 5 Mid New Cultins, Edinburgh EH11 4DU, Scotland, United Kingdom

Adobe Systems Co., Ltd., Yebisu Garden Place Tower, 4-20-3 Ebisu, Shibuya-ku, Tokyo 150, Japan

For defense agencies: Restricted Rights Legend. Use, reproduction, or disclosure is subject to restrictions set forth in subparagraph (c)(1)(ii) of the Rights in Technical Data and Computer Software clause at 252.227-7013.

For civilian agencies: Restricted Rights Legend. Use, reproduction, or disclosure is subject to restrictions set forth in subparagraph (a) through (d) of the commercial Computer Software Restricted Rights clause at 52.227-19 and the limitations set forth in Adobe's standard commercial agreement for this software. Unpublished rights reserved under the copyright laws of the United States.

Printed in the USA.

Part number: 0197 3334 (3/96)

CONTENTS

INTRODUCTION	1
About this guide	2
System requirements	3
The Adobe Printer Driver package	3
 CHAPTER 1: INSTALLING THE ADOBE PRINTER DRIVER	 5
Installing the Adobe Printer Driver	5
Setting up the driver to work with your printer	7
 CHAPTER 2: SETTING PRINT OPTIONS AND PRINTING	 17
Setting page-setup options with the Adobe Printer Driver	17
Setting print options with the Adobe Printer Driver	24
Printing to a printer	28
Printing to a file	29
 APPENDIX A: TROUBLESHOOTING	 35
 APPENDIX B: GENERIC POSTSCRIPT PRINTER DESCRIPTION SETTINGS	 41
 INDEX	 43

INTRODUCTION



Welcome to the Adobe® PostScript® Printer Driver Version 8.3.1 for the Macintosh™. The Adobe Printer Driver works with any Adobe PostScript printer and lets you take full advantage of your printer's features and capabilities.

The Adobe Printer Driver offers the following features:

- Full support for all your printer's features, including multiple input paper trays or output bins, duplex (two-sided) printing, and other print enhancement technologies, specified by PostScript Printer Description (PPD) files
- Capability of saving PostScript files in a variety of portable formats
- Maintenance of separate printer settings for each PostScript printer, making it easy to use two or more PostScript printers with the same computer
- Automatic configuration for PostScript printers that support this feature
- Setup and configuration of disconnected printers and the capability of saving PostScript files for archiving until your computer is connected to a printer (via the Virtual Printer feature)
- Capability of defining and printing custom media sizes from most applications to printers that support this feature
- Capability of saving unique printer-specific settings as Adobe Printer Driver software defaults for each printer you use
- Support for all PostScript Level 1 and Level 2 printers, imagesetters, and film recorders
- System-level support for the Apple® ColorSync® software, which aids in providing accurate color matching between system monitors, scanners, and printers

The Adobe Printer Driver is an operating system program that lets application programs communicate with printers. The Adobe Printer Driver translates your application's documents into the PostScript language and

sends the PostScript document descriptions to your printer. The driver also provides information about your printer, such as available paper sizes and memory, resolution, and so on.

The Adobe Printer Driver supports PostScript Type 1 fonts (including multiple master fonts), TrueType™ fonts, and the Apple QuickDraw™ GX fonts, and can automatically download fonts to your printer. You can use the Adobe Printer Driver to save your documents as PostScript files to send to a service bureau. You can also create Encapsulated PostScript (EPS) files so that graphic images you create with one application and place in the documents of another application print with the greatest possible quality.

About this guide

This user guide explains how to install and use the Adobe Printer Driver with your Macintosh computer. In addition, Appendix A contains advice on troubleshooting printer problems, and Appendix B describes the printer options enabled by the generic PostScript Printer Description built into the Adobe Printer Driver.

The ReadMe file included on the PSPrinter 1 disk contains the latest information about the Adobe Printer Driver. The ReadMe file also contains instructions for using the Adobe Printer Driver with your printer model and with specific applications. You can read or print the ReadMe file with any word-processing program supported by the Macintosh.

This manual assumes a basic familiarity with Macintosh operations and terminology. For instructions on basic Macintosh operations, refer to your Apple documentation.

System requirements

The Adobe Printer Driver requires the following hardware and software:

- Any Apple Macintosh computer that is running System 7 or later (The Adobe Printer Driver does not run on the Macintosh 128K, 512K, and 512Ke computers.)
- 4 MB (megabytes) or more of memory
- 700K (kilobytes) of available space on the hard disk and space, as needed, for PostScript Printer Description (PPD) files
- Version 7.3 or later of the Chooser utility
- Apple ColorSync 2.0, if using the driver ColorSync features (The Adobe Printer Driver does not support ColorSync 1.x releases.)

Note: To use the Adobe Printer Driver, Apple QuickDraw GX cannot be running on your system.

The Adobe Printer Driver package

The contents of the Adobe Printer Driver package include the following:

- Adobe Printer Driver installation disks, containing the Adobe Printer Driver, Installer, the Chooser 7.3 utility, the Adobe Printer Driver ReadMe file, and PPD files
- This guide, the *Adobe PostScript Printer Driver User Guide, Macintosh Version 8.3.1*
- End-user license agreement

CHAPTER 1: INSTALLING THE ADOBE PRINTER DRIVER

This chapter explains how to install the Adobe Printer Driver on your computer and how to set up the driver to work with your printer.

Installing the Adobe Printer Driver

Installing the driver is a two-step process. First, install the driver program, and then set up the driver to work with your printer.

For safekeeping, make backup copies of the Adobe Printer Driver Installation disks before installing the printer driver. If you need help on making a backup copy, see your Macintosh documentation.

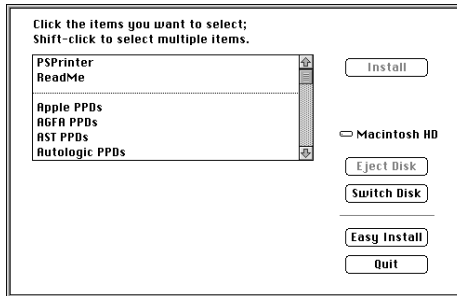
To install the Adobe Printer Driver program:

- 1** Insert the copy that you made of the Adobe Printer Driver PSPrinter 1 disk into your floppy disk drive. The Adobe Printer Driver Installation disk window opens on your desktop.
- 2** Double-click the ReadMe file and read the document for the latest information on your Adobe Printer Driver product. When you are finished, choose Quit from the File menu.
- 3** Remove or turn off any virus protection software.
- 4** Double-click the Adobe Installer program icon. The splash screen and then the Adobe Printer Driver Installer dialog box appear.



5 To begin the installation process, choose one of two options:

- To install all possible PPDs on your hard disk, click Install. You must have at least 8 MB of available disk space to install all PPDs.
- To conserve disk space and install only the PPDs specific to your printer manufacturer or printer family, click Customize.



In the Customize dialog, choose PSPrinter and the names of the manufacturers of printers whose PPDs you wish to install. You can also choose ReadMe if you wish to install and read that file later. Once you have chosen all the items you wish to install, click Install.

***Note:** Adobe recommends the Customize procedure because it conserves disk space by letting you install only the PPDs you need now. If your needs change, you can later install other necessary PPDs.*

6 If other applications are running, the Installer displays another dialog box asking whether you want to continue. To continue and quit all running applications, click Continue. No other applications can be running when you install new software.

Follow the Installer's instructions about changing installation disks. The Installer copies the Adobe Printer Driver and the Printer Descriptions folder (for PostScript Printer Description files, which completely describe a printer's features) into the Extensions folder of the System

Folder. It copies the ReadMe file to the top level of your hard disk. If required, the Installer copies the new version of the Chooser into the Apple Menu Items folder of the System Folder.

Note: *The Adobe Printer Driver does not function properly without Chooser 7.3 or later. If you do not use the Installer but instead drag the software from the installation disk to the System Folder on your hard disk manually, copy both the Chooser and PSPrinter 8.3.1 to your System Folder.*

7 Replace or turn on any virus protection software that you removed in step 3.

Setting up the driver to work with your printer

Next, you need to select a printer and set up the driver to work with the selected printer. To set up the driver, you select a PostScript Printer Description (PPD) file to use with your printer. The driver uses the information in the PPD file to give you control of all your printer's features.

Note: *If you do not have a PPD file for your printer, you can use the Generic PPD built into the Adobe Printer Driver. The Generic PPD lets you print and gives you minimal control of your printer's features; for a list of the options provided in the Generic PPD, see Appendix B.*

Selecting and automatically configuring a printer

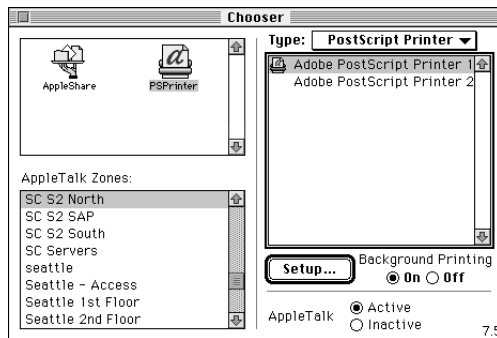
This section describes how to use the Chooser to select a printer, adjust background printing, and automatically configure the selected printer.

To select a printer:

1 If you are using a local printer, connect it to your computer and turn both of them on.

2 Select Chooser from the Apple menu, and click the PSPrinter icon. You might need to scroll down to locate the PSPrinter icon.

Note: *If Apple QuickDraw GX is running on your system, you might not be able to choose the PSPrinter icon. To make the PSPrinter icon available, turn off QuickDraw GX.*



3 Select the zone in which your printer resides, if necessary. You might need to scroll through the list of zones and printers to find the one that you want to use.

4 Click the name of the printer that you want to use in the list in the upper right scroll pane of the Chooser. A message appears reminding you to click Setup to assign a PPD after selecting the printer.

Note: If you have selected a color printer and have installed the Apple ColorSync software, you can select the monitor that the Adobe Printer Driver references when sending color coordinates to the printer. To select a system monitor, see the Apple ColorSync documentation.

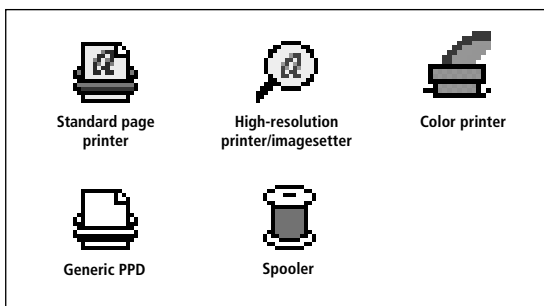
5 To be reminded to click Setup each time you select a printer, click OK. To eliminate this message, click the check box; then click OK.

6 Adjust background printing, if desired.

Click On (the default) if you want the computer to be able to do other work while a file is printing. Otherwise, click Off.

7 Click Setup. For most printers, the Adobe Printer Driver searches for a PPD file that matches the model of the selected PostScript printer and automatically configures the driver to match the printer.

If the Adobe Printer Driver finds a match and the PPD file supports automatic configuration, you have completed the setup of the driver; an icon appears to the left of the printer name in the Chooser to show that the driver is set up to work with that printer. The icons indicate the type of printer that you have just set up and might look like any of the following:



If the Adobe Printer Driver cannot find the appropriate PPD file, you must manually select a PPD. For more information, see “Selecting the PostScript Printer Description (PPD) File Manually” on page 10.

If the PPD file does not support automatic configuration, you must manually configure the installed options. For information on manually configuring installed options, see “Configuring Options in the PPD File” on page 15.

The remaining sections of this chapter explain how to change the PPD file after initial setup, how to configure the driver after changing your printer’s configuration, how to display printer information, and how to access the Help facility.

For instructions on how to change print options for different kinds of documents, see Chapter 2, “Setting Print Options and Printing.”

Selecting the PostScript Printer Description (PPD) file manually

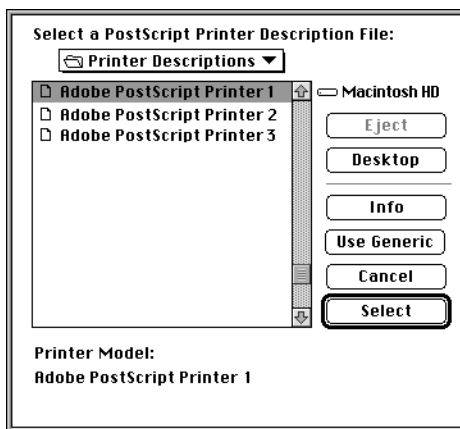
This section explains how to select the PPD file to use with your printer manually if the Adobe Printer Driver is unable to select it automatically. For example, if you choose a spooler (a print-queuing device) as the printer, you might have to select the PPD file manually.

***Note:** If you click Cancel at any time in this procedure, the Adobe Printer Driver returns you to the Chooser, and the driver is set up to work with your printer via the Generic PPD; for a list of options provided in the Generic PPD, see Appendix B.*

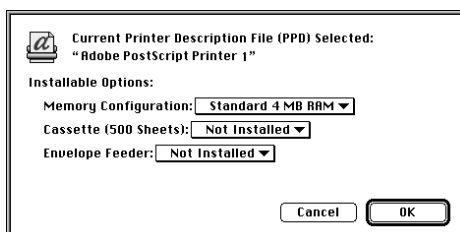
To select the PPD file manually:

- 1** Select a printer, as described in the previous section, “Selecting and Automatically Configuring a Printer.”
- 2** If the Adobe Printer Driver cannot automatically set up the driver, it requests one of the following actions:
 - If the Adobe Printer Driver discovers no PPD files that match the selected printer, you must choose a PPD file manually. The Adobe Printer Driver displays a complete list of the PPD files now available on your computer hard disk, similar to the following dialog box.

***Note:** If the Printer Descriptions list in the following dialog box does not contain the desired PPD, you can use the Generic PPD or install the desired PPD from the PSPrinter 2 or PSPrinter 3 disk. To install the PPD from the installation disks, follow the Customize method, described in “Installing the Adobe Printer Driver,” on page 5. Install only the desired PPDs; do not reinstall the Adobe Printer Driver. Once you have installed the desired PPDs, begin this procedure again.*

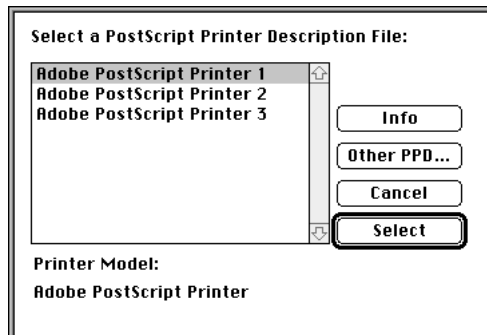


For information on the selected printer, click Info. To select the Generic PPD, click Use Generic. To select another PPD file, click the PPD name; then click Select. If the selected PPD does not support automatic configuration, the driver displays a Configure dialog box similar to the following:



The Configure dialog box shows the installable options possible for the selected PPD file. If more than four options are available, scroll through the list of pop-up menu items. Press the downward arrow for each option that you want to configure, and then release on the value that you want to assign to that option. When you are satisfied with the values, click OK.

- If the Adobe Printer Driver finds more than one PPD file that matches the selected printer, choose from the matching subset of all available PPD files. The Adobe Printer Driver displays a dialog box similar to the following:



Click the name of the PPD file to use; then click Select. For information on the currently selected printer, click Info. If you want to view all available PPD files, click Other; a complete list of the available PPDs appears. Click the name of the PPD file that you want to use, then click Select.

- If the Adobe Printer Driver finds a match, but the PPD file does not support automatic configuration, manually configure the printer. A Configure dialog box appears. Assign values to the installable options, as described in the first bullet of step 2.

Changing the current PPD file

You use the Setup option to change the current PPD file for a selected printer after the initial setup.

To change the selected PPD file:

- 1 Select Chooser from the Apple menu, and click the PSPrinter icon. You might need to scroll down to locate the PSPrinter icon.

2 In the upper right scroll pane of the Chooser, double-click the name of the PostScript printer for which you want to change the PPD file. Optionally, select the name of the printer, and then click Setup.



3 Choose one of two options:

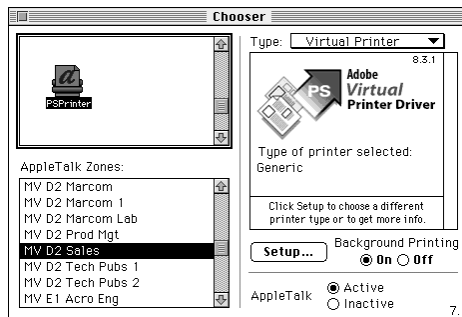
- To let the Adobe Printer Driver automatically select a new PPD file, click Auto Setup in the Setup dialog box. If the Adobe Printer Driver cannot automatically set up the printer, you must manually set it up. For more information, see “Selecting the PostScript Printer Description (PPD) File Manually” on page 10.
- To select a specific PPD file, click Select PPD. The Adobe Printer Driver displays a dialog box showing the PPD files that exist in the Printer Descriptions folder in the Extensions folder. Click the name of the PPD file that you want to use; then click Select. If none of the PPD files seems to match your printer model, you can either use the Generic PPD, use a PPD file for another printer similar to yours, or cancel the operation. To use the Generic PPD, click Use Generic. To select a similar printer’s PPD file, click the name from the PPD files listed, and click Select. To cancel and return to the Setup dialog box, click Cancel.

Selecting a PPD file when your computer is not connected to the desired printer

You might wish to set up the driver to work with a printer that is turned off or not now connected to the computer you are using, either directly or over the network. This feature, called Virtual Printer, can be handy if you are working on a portable computer, for example, and need to adjust the margins associated with the Page Size value or view a document via Print Preview or Page Layout. This feature is called *virtual* because it associates the document with the attributes of a specific printer, rather than with the physical device itself.

To select a PPD file when your computer is not connected to the desired printer:

- 1** Select Chooser from the Apple menu and click the PSPrinter icon. You might need to scroll down to locate the PSPrinter icon.
- 2** From the Type menu, choose Virtual Printer. The Adobe Virtual Printer Driver screen appears. When you first set up the Virtual Printer, the selected printer type is Generic.



- 3** Click Setup. The Adobe Printer Driver displays a dialog box showing the PPD files that exist in the Printer Descriptions folder in the Extensions folder.
- 4** Click the name of the PPD file that you want to use, and then click Select. If required, the driver displays a Configure dialog box showing the installable options.

***Note:** If you do not select a PPD, the Adobe Printer Driver uses the Generic PPD.*

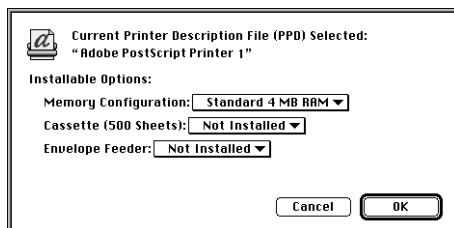
- 5** Manually configure Virtual Printer by scrolling through the list of pop-up menu items and pressing the downward arrow for each option that you want to configure, as required. Then release on the value that you want to assign to that option. When you are satisfied with the values, click OK.

Configuring options in the PPD file

Some printers support additional installation options for which you can configure your printer. For information on configuring your printer, see your printer documentation. If you do change the configuration of your printer, you should notify the Adobe Printer Driver of the current set of installed options. To do so, use the Configure option.

To notify the Adobe Printer Driver of the installed options:

1 Click Configure in the Setup dialog box. The installable options for the selected PPD file appear. For example, for some printers, the amount of memory installed in the printer is configurable and can be upgraded, as follows:



2 Select the value for the option to configure.

If more than four options are available, scroll through the list of pop-up menu items, press the downward arrow for each option that you want to configure, and then release on the value that you want to assign to that option.

3 When you have finished configuring the installable options, click OK.

Displaying printer information

The Adobe Printer Driver provides a feature that lets you display information about the printer selected in the Chooser. This feature displays the printer name, zone, product type, PostScript version and level, printer resolution, fax support, memory installed and available, binary communications support, color support, and the name of the PPD file associated with the printer. To use this feature, select the Printer Info option in the Setup dialog box.

Using the Help facility

For more information about the Adobe Printer Driver setup features, click Help in the Setup dialog box, or select Show Balloons from the Help menu.

CHAPTER 2: SETTING PRINT OPTIONS AND PRINTING

This chapter explains how to change page-setup and print options. It also explains how to print to a printer or a PostScript file.

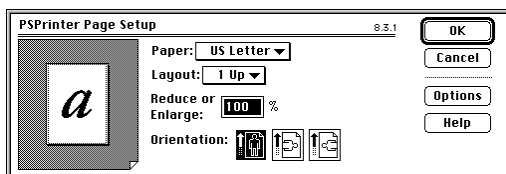
Setting page-setup options with the Adobe Printer Driver

The Adobe Printer Driver provides the page-setup options described in the following sections. The following sections do not describe any application-specific page-setup options that might appear under the page orientation options in the PSPrinter Page Setup dialog box. For information on those options, see the documentation for your application.

For most applications, page-setup options that you set with the Adobe Printer Driver remain in effect on a document-by-document basis until you change them.

To use the Page Setup dialog box to change page-setup options:

- 1 From the File menu of your application, select Page Setup.



- 2 Select the values you want for the page-setup options described in the next section.

Paper

Use this option to choose any paper size that your printer supports. The default is normally 8.5 by 11 inches (US Letter). However, when the Adobe Printer Driver is configured for markets other than the United States, the default paper size is A4. Paper size options vary with printer model. For a description of the paper sizes supported by your printer, refer to your printer documentation. Make sure that the paper size you select matches the paper in the paper source.

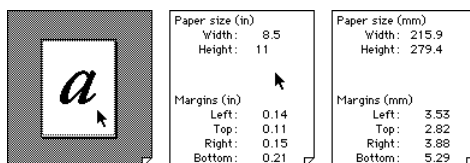
If your printer supports custom paper sizes, the Custom option is available in the Paper pop-up menu. If you select Custom, you can edit the dimensions of the page. For more information, see the following section, “Page Image.”

Note: *If you reconfigure the Adobe Printer Driver with a new printer that does not support the previously selected paper size or the Custom feature, the item “Other” is added to the Paper menu and selected as the default. Do not leave Other selected; select another Paper value, and click OK.*

Page image

This option shows the size, arrangement, and appearance of the printed results. The page image changes to reflect the layout options chosen. The outer, solid rectangle represents the edge of the physical paper; the inner, dotted rectangle represents the boundaries of the area in which the Adobe Printer Driver will print, called the *imageable area*.

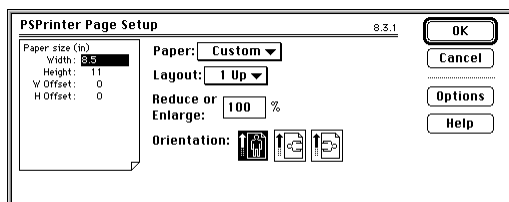
For a listing of the dimensions of this image, click anywhere within the page image icon (see previous illustration). Dimensions include height and width of the paper size and the imageable area for the top, left, bottom, and right margins. Click a second time to view the values in alternate units (inches or millimeters). Click a third time to return to the page image.



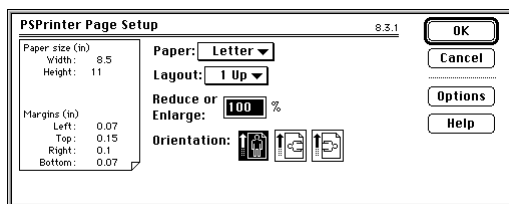
If the selected PPD allows you to select Custom as the Paper value and you select Custom, you can edit the image values to reflect the size of your paper. Click the paper image anywhere to display the default numerical dimensions. Use the Tab key to move through the dimensions and select the field that you want to edit. Enter the new value in millimeters or inches. For more information, see the preceding section, “Paper,” on page 18.

***Note:** Although you can specify Custom dimension values in millimeters or inches, the Adobe Printer Driver stores these values internally in points (one point equals 1/72 of an inch). You might notice a difference in reported dimensions because of the driver’s internal conversion from millimeters or inches to points.*

If you have selected Custom as a Paper value, two types of paper devices are possible: roll-fed or cut-sheet. The default dimensions of the paper image vary according to the type of paper device.



Roll-fed Paper Device Type



Cut-sheet Paper Device Type

For roll-fed devices, no margin dimensions are necessary because the imageable area is the same as the requested page size, and the margins are fixed at zero. Four numerical dimensions are possible: width, height, width offset, and height offset. The width shows the size of the page

perpendicular to the direction of the paper device feed. The height is measured parallel to the direction of the paper device feed. The offsets are measured from the bottom left edge of the device.

For cut-sheet devices, the page image icon lets you set width, height, and the left, top, right, and bottom margins.

Layout

Use this option to specify how the Adobe Printer Driver arranges pages on the paper. The Adobe Printer Driver adjusts the orientation of the physical page to best fit the orientation of the logical pages selected for printing. The following options are possible for the portrait and landscape orientations specified for the logical page. Several of these options are represented graphically on the next page:

1 Up. This is the default; it prints one page of the document on the sheet of paper. For this layout option, the orientations of the physical and logical pages match.

2 Up. This option prints two pages of the document on the sheet of paper. For this layout option, the orientation of the physical page is opposite from the orientation of the logical page.

4 Up. This option prints four pages of the document on the sheet of paper. For this layout option, the orientations of the physical and logical pages match.

6 Up. This option prints six pages of the document on the sheet of paper. For this layout option, the orientation of the physical page is opposite from the orientation of the logical page.

9 Up. This option prints nine pages of the document on the sheet of paper. For this layout option, the orientations of the physical and logical pages match.

16 Up. This option prints 16 pages of the document on the sheet of paper. For this layout option, the orientations of the physical and logical pages match.

In all modes but 1 Up, lines appear around each document page arranged on the page of paper. Once you select a Layout value, the page image changes to reflect your selection.

Note: The PPD for a specific printer generally specifies the rotation directions for landscape orientation, which can vary among printer manufacturers. Depending on your PPD, landscape orientation on your printer might be different from that shown in the following graphic. Alternate landscape gives you the option of overriding the default rotation for landscape orientation in the PPD for your printer. For more information, see “Orientation” on page 22.



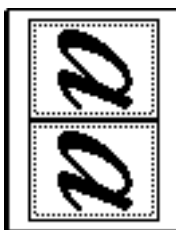
1-Up Portrait



1-Up Landscape



1-Up Alternate



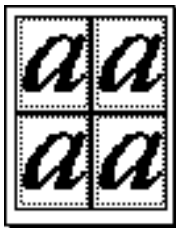
2-Up Portrait



2-Up Landscape



2-Up Alternate



4-Up Portrait



4-Up Landscape



4-Up Alternate

Reduce or enlarge

Use this option to reduce or enlarge the contents of the printed page. Scale factors range from 25 percent to 400 percent, and the default value is 100 percent. The Adobe Printer Driver prints out a single page and normally positions the enlarged or reduced image in the top left corner of that page. For enlargements over 100 percent, the printer's paper size determines whether the enlarged image is partially or fully printed. If pages in the document are larger than the printer paper size, for example, a complete image is not printed. The Adobe Printer Driver does not automatically print an image over several pages (called *tiling*).

Orientation

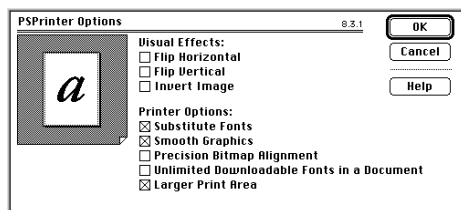
Use these options to choose the direction in which your document is printed on the paper—either portrait, landscape, or alternate landscape. *Portrait* orientation means that the page is taller than it is wide; *landscape* orientation means that the page is wider than it is tall.

Different printer manufacturers might have different preferred rotation directions for landscape orientation; usually the PPD file of the selected printer specifies the direction in which pages are automatically rotated from portrait to landscape orientation. The two landscape buttons in the Page Setup dialog box indicate in which direction the Adobe Printer Driver will rotate portrait pages to a landscape position—clockwise or counterclockwise.

The counterclockwise orientation option is usually the best choice if you want hole punches to appear at the top of your landscape page. However, you should print a test page to verify that the selected landscape option and the position of the three-holed paper in the printer's paper tray produce the desired results. If they do not, change the landscape option accordingly.

Options

Use the Options button to specify further layout and formatting information. The Options dialog box provides the following possible options and defaults, depending on the PPD you have selected:



***Note:** If you have specified a layout value other than 1 Up and an orientation value of landscape or alternate landscape, you cannot use the Flip Horizontal or Flip Vertical options of the Options dialog box. Also, to print a document upside down, turn on both the Flip Horizontal and Flip Vertical options.*

Flip Horizontal. Use this option to print a mirror image of the document.

Flip Vertical. Use this option to print a mirror image of the document upside down.

Invert Image. Use this option to print the white areas of the document black and the black areas of the document white.

Substitute Fonts. Use this option to let the printer substitute available fonts during printing. The printer substitutes Helvetica for Geneva, Courier for Monaco, and Times for New York. By default, this option is turned on.

Smooth Graphics. Use this option to improve the quality of screen-resolution graphic images by smoothing the jagged edges. By default, this option is turned on.

Precision Bitmap Alignment. Use this option to reduce the printed document appropriately according to the resolution of the printer. This option might provide greater readability of your screen-resolution bitmapped images.

Unlimited Downloadable Fonts in a Document. Use this option if you want to use a large number of fonts in a document and have them sent to the printer as needed to print but your printer has limited memory installed. Do not use this option for print jobs that contain multiple master fonts.

Larger Print Area. Use this option to print on more area of the page. This option uses more printer memory and therefore limits the number of downloadable fonts. Downloadable fonts are stored separately from the printer and sent to it at the time of printing. Not all printers support multiple print areas on all paper sizes. If the selected printer does not support multiple print areas for this paper size, this option is unavailable. The availability of this option depends on the PPD and paper type that you select and whether the selected printer supports the Larger Print Area.

The Adobe Printer Driver also provides a Help button in the Options dialog box, offering explanations of the layout and formatting options.

To save the settings you specify in the Options dialog box as default values, when exiting the dialog box click OK while holding down the Option key.

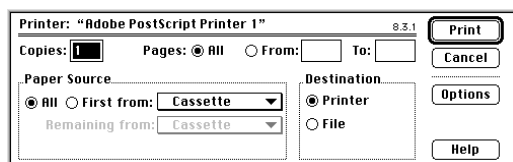
Setting print options with the Adobe Printer Driver

You can use the Adobe Printer Driver to select various print options, such as which pages of the document to print, paper source, and so on.

The Adobe Printer Driver itself provides several options, described in the following sections. The following sections do not describe any application-specific print options that might appear under the Paper Source and Destination boxes in the Print dialog box. For information on those options, see the documentation for your application.

To use the Print dialog box to change print options:

1 In the File menu of your application, select Print. The Print dialog box appears.



2 Select the values you want for the print options described in the following sections.

Copies

Use this option to specify the number of copies of the document that you want the printer to print.

Pages

Use this option to specify which pages of the document to print. To print the whole document, click All (the default). To print a range of pages, type the first page to print in the From field and the last page to print in the To field; the Adobe Printer Driver prints the first and last pages and all pages between those pages.

Paper source

Use this option to choose how paper is provided to the printer—automatically from specific paper trays or manually. Paper source options vary with printer model. You can specify a single source for all paper or different sources for the first and remaining pages. This feature is handy, for example, if you want company letterhead to be used for only the first page of a document. The default value is All, for a single source for all paper.

Destination

Use this option to choose from two destinations to which the Adobe Printer Driver can send data from your application:

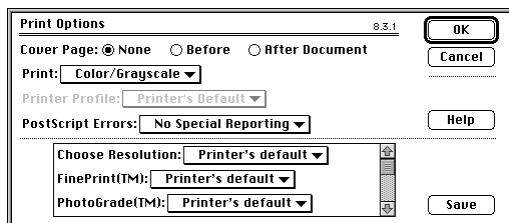
- Printer, the default value, which specifies that the data is sent to a printer
- File, which specifies that the data is saved to a disk file in a format you choose

The default value is normally Printer. If you choose a destination other than Printer for a print job, once that print job is complete the value is restored to Printer. If you are setting up a virtual printer, however, the value is always File.

Options

Click the Options button in the Print dialog box to access the options described in the following paragraphs.

Some options that you can set in the Print Options dialog box vary from printer to printer. These differences include duplex printing, printer resolution settings, image enhancement functions, watermark selection and modification, and so on. The availability of these options depends on the selected printer model and the way in which the driver is configured for that printer. The Print Options dialog box is similar to the following:



The settings for Cover Page, Print (Color/Grayscale), and PostScript Errors remain intact from document to document. The values for printer-specific settings—those that appear below the dotted line in the Print Options dialog box—can be saved as Adobe Printer Driver

software defaults. To save these values as defaults, click the Save button on the Print Options dialog box. Each time that you print to this printer, the Adobe Printer Driver returns to these default settings.

***Note:** The Printer's default value for the printer-specific values tells the driver to use the values that have been manually set on the printer's front panel.*

Cover Page. Use these options to specify the presence and position of the document's cover page. The generic cover page built into the Adobe Printer Driver includes the name of the user, application name, document name, date and time, printer name, and number of pages in the job.

Print. Use these options to specify whether and how to print the document in color.

The Color/Grayscale option (the default) provides for color printing and, for monochrome printers, maps colors to equivalent PostScript grayscale shades. Color/Grayscale imaging generally produces better visuals than does black-and-white, even on monochrome printers.

The Black and White option limits printing to monochrome only. Use this option if you want the same output as you used to obtain using the Apple LaserWriter® 7. x printer driver with black-and-white printers. Most users will not use this option.

The ColorSync Color Matching option provides for color conversion on the Macintosh and supports PostScript Level 1 and Level 2 printers. This option requires a printer profile and is available only if the ColorSync software is installed. Choose this option if your Macintosh processor is faster and more powerful than your printer. If you want color conversions and have only a PostScript Level 1 printer, you must use this option.

The PostScript Color Matching option provides for color conversion on the printer. Use this option if your printer is not now color calibrated and is a PostScript Level 2 printer. This option requires you to select a printer profile. If you are using a Printer Profile selection other than Printer's Default, this option generates device-dependent color, using color-

rendering dictionaries downloaded from the computer to the printer. If you are using the Printer's Default selection, this option uses the device-independent color capabilities built into every PostScript Level 2 printer.

***Note:** When selecting Printer Profile > Printer's Default, consider that some printers might not provide all the built-in color-rendering dictionaries for the various paper types you want to use. In this case, select a specific printer profile that meets your needs from the Printer Profile menu. If a specific printer profile for your color printer does not appear in the Printer Profiles menu, you might not have one for your printer, and you should contact your printer manufacturer.*

Printer Profile: Use this option to choose a printer profile for your color printer. If using the ColorSync Color Matching or PostScript Color Matching option described above, you must select a Printer Profile value. Generally, if ColorSync software and printer profiles are unavailable on your system, this option is unavailable. However, if you choose Print > PostScript Color Matching, the Printer Profile > Printer's Default option is available.

PostScript Errors. Use this option to specify the level of error reporting for PostScript errors that might occur during the course of printing.

The No Special Reporting option (the default) provides no detailed information about the PostScript error.

The Summarize on Screen option displays a message describing on the monitor screen the nature of the PostScript error. This feature is available only when background printing is turned off.

The Print Detailed Report option prints to the printer a report describing the PostScript error.

Printing to a printer

Once you have set the page-setup and print options for your document, you can print the document on your printer.

To print a document on your printer:

- 1** In the Print dialog box, select Printer in the Destination box.
- 2** Click Print.

Printing to a file

As an alternative to printing your document on your printer, you can save a PostScript language description of your document as a disk file. PostScript language descriptions of your documents can be useful for creating document archives or printing documents without using the application that created them (at a service bureau, for example).

Another use of printing to a file is to create an Encapsulated PostScript (EPS) file. You can use EPS files to export single pages from one application to another. EPS files can include any combination of text, graphics, and images, but they do not describe complete documents. For example, by saving a page as an EPS file, you can insert a page of a document created with one application as an illustration into a document created by another application.

When printing to an EPS file, keep in mind the following:

- The Adobe Printer Driver cannot, by itself, ensure a correct EPS file. The application must also support EPS output by telling the Adobe Printer Driver where on the page the illustration or text is located. If, when you import EPS files generated by the Adobe Printer Driver into other applications, the displayed illustration looks distorted, your original application is not providing the driver enough information to produce the preview correctly. You can, however, print the file correctly even without the correct preview. For more information on previews, see “Format” on page 31.
- Each EPS file can be no more than a single page. When using the application’s Print dialog box, be sure to enter the same page number in the From and To fields so that only one page is created for each EPS file.
- EPS files generated by the Adobe Printer Driver provide two types of on-screen preview and an option for no preview, as described in “Format” on page 31.

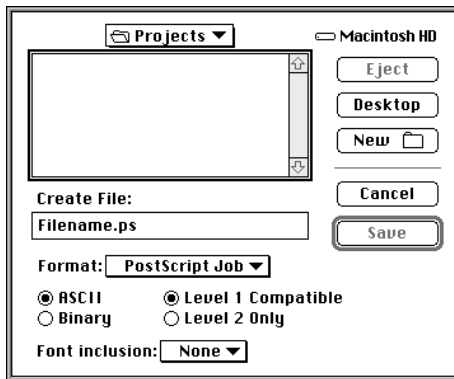
To print to a file:

1 In the Print dialog box, select File from the Destination box; then click the Save button. The Save dialog box appears.

***Note:** No cover page or error handler information is saved with the PostScript language description of your document, even if you have previously selected these print and page-setup options.*

2 Select the name of the file folder in which to save the PostScript file.

To create a new folder in which to place the PostScript file, click New Folder, and specify the name of the new folder.



***Note:** The extension on the default filename in the Create File field changes automatically when you change the Format value for the file.*

3 In the Create File field, change the name of the file to contain the PostScript document if desired.

4 Specify the details on how to save the file. The possible options are described in the following sections.

5 Click the Save button. The file is saved to the specified file and file folder, and you are returned to your application. All Save options return to the default values each time you select Save.

Format

Use these options to choose the PostScript, Encapsulated PostScript, or Printer Job Language (PJL) format in which to save a document. The following values are possible:

PostScript Job. This option provides a copy of the Adobe Printer Driver's PostScript output exactly as it would have been sent to the output device. PostScript Job is the default option.

***Note:** Because a document's cover page is printed as a separate job, it is excluded from the version of the document saved to a file, even if you request it in the Print Options dialog box.*

EPS Mac Standard Preview. This option provides a 72-dots-per-inch (dpi) bitmap monochrome preview image for displaying the page on the Macintosh screen. The preview image of an EPS file created using this format option might appear distorted when placed into other applications.

EPS Mac Enhanced Preview. This option provides a QuickDraw PICT format as a preview for displaying the page on the Macintosh screen. The preview image of an EPS file created using this format option scales accurately (without jagged edges) when placed into other applications.

EPS No Preview. This option provides no associated preview image for displaying the page on a Macintosh screen. This format is intended for transfer to computers other than a Macintosh. If you choose this option, the preview images of the EPS-generated files appear as blank or black boxes—or as a box containing an X, when imported into other applications.

***Note:** Some applications do not provide enough data to create a preview. In such cases, parts of the preview might be missing. Also, remember that EPS files can be no more than a single page.*

PJL Job. This format is available only when you select a printer that supports PJL. This option lets you save the document in the HP Printer Job Language, to print as a PostScript job with embedded PJL commands. If you save the document in PJL, it will print correctly only on a printer that supports PJL.

ASCII/Binary

Use these options to specify whether a PostScript Job or PJJ Job file should be saved in ASCII or binary format. EPS files are always saved in ASCII format.

ASCII. PostScript files are normally ASCII text files that can be opened with any word-processing application. The default value is ASCII.

Binary. Binary encoding speeds printing. Your printer must be set up to receive binary data; otherwise, selecting this option might cause printing errors. (Most printers connected over LocalTalk® or EtherTalk® are set up automatically to receive binary data.)

***Note:** If you select the Binary or PJJ option in the Save dialog box, the PostScript files can include binary or control characters, which might make them unsuitable for use with word processors and certain telecommunications applications and print spoolers. If you intend to transfer the PostScript file over telecommunications services or through print spoolers, the services must fully support binary or PJJ data transfer, as needed.*

Level of PostScript compatibility

Use these options to specify the level of PostScript compatibility for the file to be saved.

Level 1 Compatible. This option (the default) specifies compatibility with all PostScript printers.

Level 2 Only. This option specifies compatibility with Level 2 printers only. Using Level 2 features speeds printing and is the recommended setting. However, PostScript files created with this option will most likely not print correctly on a PostScript Level 1 printer. Use this setting for all Level 2 printers and if you are creating files that will later be converted to PDF format with Adobe Acrobat Distiller.

Font inclusion

Use these options to include downloadable fonts in the PostScript file. The following values are possible:

None. Select this option (the default) if you assume all needed fonts are already available on the device where the file will be viewed or printed and you want to include no fonts.

All. Select this option to include all fonts that are used in the document and that are available on the host Macintosh.

All But Standard 13. Select this option to include all fonts that are used in the document and that are available on the host Macintosh—except the core set of 13 standard fonts that most PostScript printers support.

The core set of 13 standard fonts includes Courier, Symbol, Helvetica, Times Roman, and their variations, such as bold and oblique.

All But Standard 35. Select this option to include all fonts that are used in the document and that are available on the host Macintosh—except the set of 35 standard fonts that many PostScript printers support.

The set of 35 standard fonts includes the standard 13 fonts and Avant Garde, Bookman, Helvetica Narrow, New Century Schoolbook, Palatino, Zapf Chancery, Zapf Dingbats, and their variations.

All But Fonts in PPD File. Select this option to include any fonts that appear in the document but are not listed in the PPD file as resident on the printer.

***Note:** If you know the printer on which the document will be printed, the All But Fonts in PPD File option is recommended. If you do not know the printer on which the document will be printed, the All But Standard 13 option is recommended.*

APPENDIX A: TROUBLESHOOTING

This appendix offers solutions to problems that you may encounter using the Adobe Printer Driver.

When the Adobe Printer Driver detects a problem, it displays an alert message describing the problem. If you receive an alert message, follow any instructions provided in the message.

If you have a problem but do not receive an alert message, look through the following list of problems to find the solution. If you don't find a description of your problem in this appendix, refer to the ReadMe file on your installation disk. If after checking the troubleshooting topics in this appendix and the ReadMe file you still need help, contact your printer manufacturer or application vendor.

The printer isn't working

Problem: You've installed the Adobe Printer Driver and set up the driver for your printer, but your printer isn't working. A number of problems can cause your printer to fail to print:

- The printer is not turned on.
- The printer is not connected correctly to your computer or network.
- The printer is not selected in the Chooser.
- The printer is broken.

Solution: Check for these problems in the preceding sequence. If you cannot correct the problem, carefully repeat the installation instructions in your printer documentation. If the printer still does not work, contact your printer dealer or printer manufacturer for help.

The printer stops printing

Problem: You try to print a document, but the printer stops printing before the entire document has printed. A number of problems can cause your printer to stop printing:

- The computer memory is too low to print the entire document.
- The printer requires more memory than is available to print a complicated page.
- The printer encounters a PostScript language error while interpreting the PostScript language description of your document.
- The output from the application is incorrect or incomplete.

Solution: If the Macintosh computer memory is low (which is usually the case if the alert message doesn't indicate a specific device), you can make more memory available by reducing the number of applications that you run at the same time, by allocating more memory to your printing application using the Macintosh Get Info function, or by purchasing additional memory.

If the alert message indicates a memory problem in the printer, continue printing. If the resulting output is unsatisfactory, increase the memory in the printer, reduce the number of fonts used in the document, or print the document in smaller portions.

The Unlimited Downloadable Fonts in a Document printer option also helps you to manage printer memory. To set that option, select Options in the Page Setup dialog box; the Options dialog box appears. In the Options dialog box, click Unlimited Downloadable Fonts in a Document.

To determine whether a PostScript error is at fault, choose Print from the File menu; click Options; in the Print Options dialog box, select Print Detailed Report for the PostScript Errors option, and print the document again. If a PostScript error occurs, the printer prints an error page. For help in understanding the error condition, contact your application vendor.

If you cannot correct the problem, contact your printer dealer or printer manufacturer for help.

An alert message indicating that the Preferences file is damaged or not found appears when you are using the Print or Page Setup option

Problem: This problem can arise under one of three conditions: when your computer has inadequate available disk space to parse the PostScript Printer Description file, when the Preferences file is missing, or when the Preferences file contains incorrect information.

Solution: If less than 100K of disk space is available, you may receive messages about the selected PPD and a suggestion to delete the Preferences file. Do not delete the Preferences file; instead, make at least 100K of space available on your hard disk, and select and set up the printer again.

If the Preferences file is missing, it may not have been created when you first tried to set up your printer or first printed after installing the Adobe Printer Driver. Select and set up the printer again.

If you suspect that the Preferences file contains incorrect information, the old Preferences file may not have been deleted when the driver was setting up a new printer. Delete the PSPrinter Prefs file in the Preferences folder of the System Folder. Select and set up the printer again.

The Virtual Printer feature is not available

Problem: You want to set up a virtual printer, but Virtual Printer is unavailable in the Type menu in the Chooser.

Solution: The correct version of the Chooser is not installed on the computer or is not being used. To set up a virtual printer, you must be running version 7.3 or higher of the Chooser. Make sure the correct version of the Chooser is installed in the Apple Menu Items folder of the System Folder. If the correct version is not installed, copy it from the installation disk.

The driver does not automatically set up the selected printer

Problem: You are running System 7 on your Macintosh computer, and you have clicked Setup in the Chooser or Auto Select in the Resetup dialog box, but the driver does not automatically set up the selected printer.

Solution: You may be missing the PPD file, or the PPD folder may be named incorrectly. The PPD folder can be named only “Printer Descriptions.” Make sure that the PPD folder is named Printer Descriptions. Also verify that all of the PPD files are in the PPD folder and that the folder resides in the Extensions folder within the System Folder. If you are missing the required PPD file, see your system administrator or your printer vendor.

If after you try to resolve the problem following the above suggestions, the problem still exists, your printer might not support the Auto Setup feature.

You can't set the print time in the PrintMonitor dialog box

Problem: You cannot set the print time in the PrintMonitor dialog box, and an Alert dialog box indicating insufficient memory appears.

Solution: Click OK in the Alert dialog box, go to the Finder and choose PrintMonitor, and reset the print time.

The ColorSync Color Matching option is not available

Problem: The Print > ColorSync Color Matching option is unavailable in the Print Options dialog box.

Solution: The Apple ColorSync software might not be installed on your computer, or a ColorSync 1.x version might be installed. The Adobe Printer Driver does not support ColorSync 1.x releases. To use the driver ColorSync features, make sure that Apple ColorSync 2.0 is installed on your Macintosh.

Your printouts do not print with the correct colors

Problem: You selected the Print > PostScript Color Matching or the Print > ColorSync Color Matching option and a Printer Profile option, but when you try to print to your color printer, the color looks wrong.

Solution: You might have selected Printer Profile > Printer's Default. If so, remember that some printers might not provide all the built-in color-rendering dictionaries for the various paper types you want to use. Select a printer profile specific to your color printer. Contact your printer manufacturer if you do not have the proper color profile for your printer, or if you are unsure which is the correct profile for your printer.

An EPS file does not print with the correct colors

Problem: You created a color EPS file using the Adobe Printer Driver, but when you try to print a document containing the EPS file to your color printer, the color looks wrong.

Solution: When creating the EPS file, you might have selected Printer Profile > Printer's Default, which is often the proper choice. However, remember that some printers might not provide all the built-in color-rendering dictionaries needed to print the EPS file correctly. Also, some applications are not sophisticated enough to tell the driver to download any missing color-rendering dictionaries from your Macintosh.

Choose one of these solutions to your problem:

- If you are printing to a high-end printer with most color-rendering capabilities built-in, select Printer Profile > Printer's Default both when you are creating the EPS file and when you are printing the document embedded with the EPS file.
- If you are printing to a printer with limited built-in color-rendering capabilities, create the EPS file specifying the appropriate printer profile and specify the same printer profile when printing the document embedded with the EPS file. This solution ensures that the EPS file will print in the correct colors, but sacrifices file portability.
- Contact your printer manufacturer if you do not have the proper printer profile for your color printer.

An EPS file does not print with the correct fonts

Problem: Your application is not downloading to the printer the fonts included with the EPS file when you saved it.

Solution: This problem occurs only with some applications. To correct this problem, download any fonts contained in the EPS file to the printer before printing the saved EPS file.

APPENDIX B: GENERIC POSTSCRIPT PRINTER DESCRIPTION SETTINGS

The generic PostScript Printer Description defines the characteristics of a printer with the following features available on almost all PostScript printers:

- Cassette and manual paper sources
- Destination values of Printer and File, for sending data from your application
- Clockwise rotation of landscape pages

The following paper sizes:

- US Letter
- US Legal
- A4
- B5

If you choose a paper size from the Generic PPD that is not supported by the selected printer, the Adobe Printer Driver tries to print the job on whatever paper is currently loaded in the selected printer and uses the currently selected paper source on devices with more than one paper source.

In 1-up printing, if the available paper is smaller than the specified paper, the printed output may be clipped. If pages are printed 2-up or 4-up per physical sheet, the size of the available paper relative to the specified paper is not critical, because 2-up and 4-up pages always print in the imageable area of a page.

INDEX

Adobe Printer Driver

- destination for sending data from the application 26
- icons 9
- installation 5-7
- list of features 1
- memory requirements 3
- product package 3
- ReadMe file 2, 35
- setting up for printer 7-16
- supported fonts 2
- system requirements 3

alert messages 35

alternate orientation 22

Apple ColorSync software

- selecting monitor that the driver references 8
- software compatibility with driver 1

Apple Quickdraw GX, fonts 2

archiving PostScript documents 29

ASCII format option, for saving to file 32

Binary format option, for saving to file 32

Chooser

- installing manually 7
- version requirements for the driver 37

color printing 27

configuration, installation options for the printer 15

custom paper, specifying dimensions 19

Dialog box

Page Setup 17

Page Setup Options 23

Print 25

Print Options 26

document

format options 31-32

printing 28

saving 30

downloading, font inclusion with PostScript file 33

Encapsulated PostScript (EPS)

considerations for printing to file 29

document formats 31

file definition 29

printing file without correct fonts 40

EPS. *See* Encapsulated PostScript (EPS)

File, printing to PostScript 29-30

Flip Horizontal option, of Page Setup 23

Flip Vertical option, of Page Setup 23

font inclusion with document, options 33

fonts

downloadable with PostScript file 33

supported by driver 2

Format options, for saving documents 31-32

Help, online 16

- Installation, printer driver software 5-7
- Invert Image option, of Page Setup 23
- Landscape orientation 22
- Larger Print Area option, of Page Setup 24
- layout, of pages on paper 20-21
- Online help 16
- Options dialog box
 - Page Setup 23
 - Print 26
- orientation
 - of document on paper, types 22
 - of document pages in n-up printing 20-21
- Other option, in Paper menu 18
- Page image 18
- Page Setup dialog box 17
- Page Setup Options dialog box 23
- page-setup options 17-24
 - layout 20-21
 - orientation 22
 - page image 18
 - paper 18
 - scaling 22
- paper
 - custom 19
 - menu, Other option 18
- PJL. *See* Printer Job Language (PJL)
- portrait orientation 22
- PostScript
 - compatibility with saved file 32
 - Errors option 28
 - file encoding 32
 - printing file to 29-30
- PostScript printer
 - configuring installation options 15
 - Description (PPD). *See* PPD (PostScript Printer Description)
 - displaying information about 16
 - driver. *See* Adobe Printer Driver
 - Level 1 1, 32
 - Level 2 1, 32
 - selection with automatic configuration 7-9
- PPD (PostScript Printer Description)
 - automatic selection 7-9
 - changing current selection 12-13
 - generic settings 41
 - how driver uses it 7
 - manual selection 10-12
 - selecting when printer is unavailable 13-14
- Precision Bitmap Alignment option, of Page Setup 23
- Print dialog box 25
- print options 25-28
 - changing 24
 - Printer's Default 27
- Print Options dialog box 26
- Printer Job Language (PJL) 31
- Printer's Default value 27
- printing
 - to a PostScript file 29
- ReadMe File for Adobe Printer Driver 2
- requirements, system 3
- Scaling the contents of a page 22
- service bureau, creating PostScript files for 29
- setting up
 - driver for printing to file 30
 - driver to work with printer 7-16

Smooth Graphics option, of Page Setup 23
Substitute Fonts option, of Page Setup 23
system requirements 3

Troubleshooting

common problems 35-40
PostScript Errors option 28

Unlimited Downloadable Fonts in Document
option, of Page Setup 24

Virtual Printer

correct Chooser version 37
selecting PPD when printer is
unavailable 13-14



Adobe

Adobe Systems Incorporated
1585 Charleston Road, P.O. Box 7900
Mountain View, California 94039-7900

Adobe Systems Europe Limited
Adobe House, Edinburgh EH11 4DU
Scotland, United Kingdom

Adobe Systems Japan
Yebisu Garden Place Tower, 4-20-3 Ebisu
Shibuya-ku, Tokyo 150, Japan